



Department of Agriculture  
**BUREAU OF PLANT INDUSTRY**  
Crop Research and Production Support Division  
*692 San Andres Street, Malate, Manila*



# TARO GERMPLASM COLLECTION FOR CROP IMPROVEMENT AND PLANT GENETIC RESOURCES







It is an honor to present this catalogue, showcasing the Bureau of Plant Industry's endeavors in advancing the understanding of Taro. Rooted in our commitment to capacity-building, this initiative is a key part of our efforts to empower farmers and stakeholders to succeed in today's dynamic agricultural landscape. We aim to nurture the new generation of agricultural leaders who will drive forward the development of our food systems.

Within this catalogue, you will find a wealth of information on the various facets of Taro. We take pride in offering a comprehensive compilation of the morphological characteristics of Taro germplasms sourced from regions across the Philippines. Each entry encapsulates the distinct features of the plant, providing a nuanced understanding of the variations within this crop.

Taro, a staple in many regions, remains a treasured commodity for its versatility in culinary application and nutritional value. Whether you are a farmer, a culinary enthusiast, or a researcher engaged in botanical exploration, consider this your guide. The information presented serves not only as a background but as a valuable resource, enabling our stakeholders to actively contribute to the development of Taro production. With access to data and insights, they will be equipped to implement innovative practices and create positive changes across the entire value chain of Taro cultivation.

I extend my heartfelt gratitude to everyone who has contributed to the creation of this catalogue, from the researchers in our laboratories to the farmers in our fields. To the readers, I encourage you to explore and discover the potential of Taro cultivation. Let us use this knowledge to promote agricultural development and ensure the long-term viability of Taro farming for generations to come.





The government has been carrying out its plans to secure the country's food supply through boosting agricultural production. Food insecurity is a global concern and agricultural nations, like the Philippines, must help to counter this.

Native crops are best described as locally significant species for general nutrition, social systems, and economic sustainability. But they haven't yet gained the same level of international reputation as important vegetable commodities like tomatoes or cabbage. Taro, as one of the indigenous crops in the Philippines, is being developed and revitalized. Taro occupies a significant place in agriculture of the Asia Pacific Region. It is in this region that about 34,000 hectares of land are planted with taro which covers both fresh and dried, as of 2021.

This publication, serving as a baseline for researchers, breeders, and farmers, engaged in Taro production, would be of great help in boosting production of these indigenous crops. Since they can be grown profitably in both rural and urban settings, and because they are currently consumed and loved locally, indigenous crops are the main possibilities for increased use of crop biodiversity in horticulture.

One of the great lessons in productivity is to not waste time on the things we can't restrain, and focus on the things we can control. The world is still dealing with poverty, starvation, and population expansions. Like other nations, the Philippines aggressively looked for ways to boost food production and combat widespread hunger.

"The LORD God took the man and put him in the garden of Eden to work it and keep it."  
(Genesis 2:15)

This scripture teaches us, among other things, that each and every person is created with a purpose that was given to them by God. The world that God had made required labor to be done. In sustaining nature, we must go through the processes involved and be an efficient team player in achieving our goals.

My heartfelt congratulations to the team who made this publication possible. Serving God's purpose with the right determination and knowledge, we can achieve our goals for a modernized industry practices and sustainable nation.



# INTRODUCTION

Taro is one of the oldest food crops in the Philippines, capable of being cultivated year-round throughout the country. It ranks third in production and hectareage among root crops. However, taro is considered one of the more expensive and rare vegetables, especially in metropolitan areas, because its production is still low compared to sweet potato and cassava.

In 2023, taro held a 19% share in Phillipine exports, and a 0.38% share in imports. The production shares in 2022 was 0.64%. The export volume for 2023 was 16.16 mt, while the import volume was 498.76 mt. The production volume for 2022 was 113.13 mt. The total export value of taro in 2023 was USD 25,830, and the total import value was USD 570,060.

Taro is mainly grown as a backyard crop in small plots, but it is also cultivated on a commercial scale in regions such as Bicol, Negros Oriental, and Cavite, though these holdings are typically less than one hectare. The entire taro plant is utilized for food, with the leaves and petioles often being more significant than the corms in the Bicol Region and Eastern Visayas. Specific varieties are grown for their leaves and petioles, others for their corms, and some for both. Boiled corms are a staple food for many families, especially in hinterlands where rice is difficult to grow, and they are also enjoyed as snacks in various forms such as boiled whole corms, fried chips, and confections. Taro flour is used in special baked products, beverages, baby food, and more. In rural areas, taro harvest by-products like leaves, petioles, and peelings are commonly used as animal feed, typically chopped, cooked, and fed to hogs, with corms used for feed when they are over mature, damaged, or unsuitable for human consumption.

The CRPSD-CIPGRS researchers collected taro in different provinces of Occidental Mindoro, Oriental Mindoro, Quezon, Negros Occidental, Davao, and Batangas. Taro collections are essential for preserving and enhancing genetic diversity in several ways. They serve as repositories of diverse genetic materials, encompassing traits like disease resistance, environmental adaptability, and nutritional qualities. This diversity is essential for breeding programs to develop improved taro varieties capable of withstanding climate change and other environmental stresses. Additionally, these collections uphold cultural and historical significance by conserving traditional varieties valued by local communities. Overall, taro collections play an important role in sustainable agriculture, genetic improvement, and the preservation of cultural heritage associated with taro cultivation worldwide.



ACCESSION	PROVINCE OF ORIGIN	LOCAL NAME
00010	Oriental Mindoro	Gabi
00011	Quezon	Laing, Binako
00012	Quezon	Lagalag
00013	Occidental Rizal	Gabi
00014	Oriental Mindoro	Gabi
00015	Quezon	Laing
00016	Quezon	Laing
00017	Quezon	Laing
00018	Occidental Mindoro	Gabi
00019	Oriental Mindoro	Gabi Pula
00020	Quezon	Gabi
00021	Occidental Mindoro	Gabi
00022	Negros Occidental	Gabi
00023	Oriental Mindoro	Gabi
00024	Quezon	Laing
00025	Manila	Gabi
00026	Quezon	Laing
00027	Davao	Gabi
00028	Quezon	San Fernando
00029	Manila	Gabi
00030	Batangas	Gabi



# Accession No. 00010



Predominant position of leaf lamina surface: Erect  
Leaf base shape: Peltate  
Leaf blade margin: Entire  
Leaf blade color: Light Green  
Leaf blade color variegation: Absent  
Petiole length: 51.67 cm  
Leaf blade margin color: Green  
Leaf lamina appendages: Present  
Lamina length: 21 cm  
Petiole junction pattern: Large  
Petiole junction color: Yellow  
Sap color of leaf blade tip: Yellow  
Leaf main vein color: Light Green

Leaf main vein variegation: Absent  
Vein pattern: Y pattern  
Color of top third petiole: Light yellow  
Color of middle third: Light green  
Color of basal third: Whitish  
Petiole stripe: Absent  
Petiole basal-ring color: Purple  
Cross-section of lower part of petiole: Closed  
Sheath length: 30 cm  
Total petiole length: 51.67 cm  
Leaf sheath color: Light green  
Leaf sheath edge color: Purple  
Leaf waxiness: High



Flower formation: Absent  
Number of stolons: 11 - 20  
Stolon length: Long ( $\geq 15$  cm)  
Plant span: Narrow ( $< 50$  cm)  
Plant height: Medium (50 - 100 cm)



Corm manifestation: Yes  
Corm length: Short (8 cm)  
Corm branching : Unbranched  
Corm shape: Round  
Corm weight: 0.5 kg  
Corm cortex color: White

Corm flesh color of central part: White  
Corm flesh fibre color: Yellow or orange  
Corm skin surface: Smooth  
Corm skin thickness: Thin  
Degree of fibrousness of corm: Slightly fibrous  
Bud color: White



Number of cormels: Less than 5  
Weight of cormels: 49.5 g  
Shape of cormels: Round  
Flesh color of cormels: Yellow





# Accession No. 00011

Predominant position of leaf lamina surface: Erect  
Leaf base shape: Peltate  
Leaf blade margin: Undulate  
Leaf blade color: Green  
Leaf blade color variegation: Absent  
Petiole length: 82.33 cm  
Leaf blade margin color: Green  
Leaf lamina appendages: Present  
Lamina length: 34.67 cm  
Petiole junction pattern: Small  
Petiole junction color: Purple  
Sap color of leaf blade tip: Whitish  
Leaf main vein color: Whitish

Leaf main vein variegation: Absent  
Vein pattern: Y pattern  
Color of top third petiole: Purple  
Color of middle third: Green purple  
Color of basal third: Light brown  
Petiole stripe: Absent  
Petiole basal-ring color: White  
Cross-section of lower part of petiole: Closed  
Sheath length: 41 cm  
Total petiole length: 83.33 cm  
Leaf sheath color: Light Green  
Leaf sheath edge color: Purple  
Leaf waxiness: High



Flower formation: Absent  
Number of stolons: 1-5  
Stolon length: Short (<15 cm)  
Plant span: Medium (50 – 100 cm)  
Plant height: Tall (>100 cm)



Corm manifestation: Yes  
Corm length: Long (18 cm)  
Corm branching : Branched  
Corm shape: Cylindrical  
Corm weight: 0.5 kg  
Corm cortex color: Light yellow

Corm flesh color of central part: Light yellow  
Corm flesh fibre color: Light yellow  
Corm skin surface: Fibrous  
Corm skin thickness: Thin  
Degree of fibrousness of corm: Very fibrous  
Bud colour: Pink/red



Number of cormels: Less than 5  
Weight of cormels: 118.6 g  
Shape of cormels: Round  
Flesh color of cormels: Light yellow





# Accession No. 00012



Predominant position of leaf lamina surface: Cup-shaped  
Leaf base shape: Peltate  
Leaf blade margin: Entire  
Leaf blade color: Light green  
Leaf blade color variegation: Absent  
Petiole length: 53 cm  
Leaf blade margin color: Green  
Leaf lamina appendages: Present  
Lamina length: 21.5 cm  
Petiole junction pattern: Large  
Petiole junction color: Light green  
Sap color of leaf blade tip: Whitish  
Leaf main vein color: Light green

Leaf main vein variegation: Absent  
Vein pattern: Y pattern  
Color of top third petiole: Light green  
Color of middle third: Light green  
Color of basal third: Whitish  
Petiole stripe: Absent  
Petiole basal-ring color: Pink  
Cross-section of lower part of petiole: Closed  
Sheath length: 25 cm  
Total petiole length: 53 cm  
Leaf sheath color: Whitish  
Leaf sheath edge color: Purple  
Leaf waxiness: High



Flower formation: Absent  
Number of stolons: 6-10  
Stolon length: Long ( $\geq 15$  cm)  
Number of suckers (direct shoot): 6-10  
Plant span: Narrow ( $< 50$  cm)  
Plant height: Medium (50 - 100 cm)



Corm manifestation: Yes  
Corm length: Intermediate (12 cm)  
Corm branching : Unbranched  
Corm shape: Cylindrical  
Corm weight: 0.5 kg  
Corm cortex color: White

Corm flesh color of central part: White  
Corm flesh fibre color: Light Yellow  
Corm skin surface: Smooth  
Corm skin thickness: Thin  
Degree of fibrousness of corm: Slightly fibrous  
Bud color: White



Number of cormels: 5 - 10  
Weight of cormels: 160.7 g  
Shape of cormels: Cylindrical  
Flesh color of cormels: Yellow





# Accession No. 00013

Predominant position of leaf lamina surface: Cup-shaped  
Leaf base shape: Peltate  
Leaf blade margin: Undulate  
Leaf blade color: Yellow or yellow green  
Leaf blade color variegation: Absent  
Petiole length: 106 cm  
Leaf blade margin color: Green  
Leaf lamina appendages: Present  
Lamina length: 64 cm  
Petiole junction pattern: Medium  
Petiole junction color: Light Green  
Sap color of leaf blade tip: Whitish  
Leaf main vein color: Light Green

Leaf main vein variegation: Absent  
Vein pattern: V pattern  
Color of top third petiole: Light Green  
Color of middle third: Green  
Color of basal third: Green  
Petiole stripe: Absent  
Petiole basal-ring color: Light green  
Cross-section of lower part of petiole: Open  
Sheath length: 68.6 cm  
Total petiole length: 106 cm  
Leaf sheath colour: Green  
Leaf sheath edge color: Dark brown  
Leaf waxiness: Low



Flower formation: Absent  
Number of suckers (direct shoot): 11 - 20  
Plant span: Wide (>100 cm)  
Plant height: Tall (>100 cm)



Corm manifestation: Yes  
Corm length: Long (18 cm)  
Corm branching : Branched  
Corm shape: Cylindrical  
Corm weight: 0.5 kg  
Corm cortex color: Cream

Corm flesh color of central part: Cream  
Corm flesh fibre color: Light Red  
Corm skin surface: Fibrous  
Corm skin thickness: Thick  
Degree of fibrousness of corm: Slightly fibrous  
Bud color: Cream



Number of cormels: More than 10  
Weight of cormels: 2600 g  
Shape of cormels: Cylindrical  
Flesh color of cormels: Yellow





# Accession No. 00014



Predominant position of leaf lamina surface: Erect  
 Leaf base shape: Peltate  
 Leaf blade margin: Undulate  
 Leaf blade color: Purple  
 Leaf blade color variegation: Absent  
 Petiole length: 37 cm  
 Leaf blade margin color: Green  
 Leaf lamina appendages: Present  
 Lamina length: 15 cm  
 Petiole junction pattern: Small  
 Petiole junction color: Purple  
 Sap color of leaf blade tip: Whitish  
 Leaf main vein color: Green

Leaf main vein variegation: Absent  
 Vein pattern: Y pattern  
 Color of top third petiole: Purple  
 Color of middle third: Light green  
 Color of basal third: Light green  
 Petiole stripe: Absent  
 Petiole basal-ring color: White  
 Cross-section of lower part of petiole: Closed  
 Sheath length: 16.5 cm  
 Total petiole length: 38 cm  
 Leaf sheath color: Light green  
 Leaf sheath edge color: purple (continuous)  
 Leaf waxiness: High



Flower formation: Absent  
 Stolon length: Long ( $\geq 15$  cm)  
 Number of suckers (direct shoot): 1-5  
 Plant span: Narrow ( $< 50$  cm)  
 Plant height: Dwarf ( $< 50$  cm)



Corm manifestation: Yes  
 Corm length: Short (8 cm)  
 Corm branching : Unbranched  
 Corm shape: Elliptical  
 Corm weight: 0.5 kg  
 Corm cortex color: White

Corm flesh color of central part: White  
 Corm flesh fibre color: Light yellow  
 Corm skin surface: Fibrous  
 Corm skin thickness: Thin  
 Degree of fibrousness of corm: Slightly fibrous  
 Bud color: White



Number of cormels: Less than 5  
 Weight of cormels: 22.4 g  
 Shape of cormels: Conical  
 Flesh color of cormels: White





# Accession No. 00015

Predominant position of leaf lamina surface: Erect

Leaf base shape: Peltate

Leaf blade margin: Entire

Leaf blade color: Purple

Leaf blade color variegation: Absent

Petiole length: 52 cm

Leaf blade margin color: Green

Leaf lamina appendages: Present

Lamina length: 24 cm

Petiole junction pattern: Large

Petiole junction color: Purple

Sap color of leaf blade tip: Whitish

Leaf main vein color: Green

Leaf main vein variegation: Absent

Vein pattern: Y pattern

Color of top third petiole: Dark purple

Color of middle third: Green

Color of basal third: Green

Petiole stripe: Absent

Petiole basal-ring color: White

Cross-section of lower part of petiole: Open

Sheath length: 23 cm

Total petiole length: 53 cm

Leaf sheath color: Green

Leaf sheath edge color: Green

Leaf waxiness: High



Flower formation: Absent

Number of stolons: 6 - 10

Stolon length: Long ( $\geq 15$  cm)

Plant span: Medium (50 – 100 cm)

Plant height: Medium (50 – 100 cm)



Corm manifestation: Yes

Corm length: Intermediate (12 cm)

Corm branching : Unbranched

Corm shape: Elliptical

Corm weight: 0.5 kg

Corm cortex color: White

Corm flesh color of central part: White

Corm flesh fibre color: Light yellow

Corm skin surface: Fibrous

Corm skin thickness: Thin

Degree of fibrousness of corm: Slightly fibrous

Bud color: White

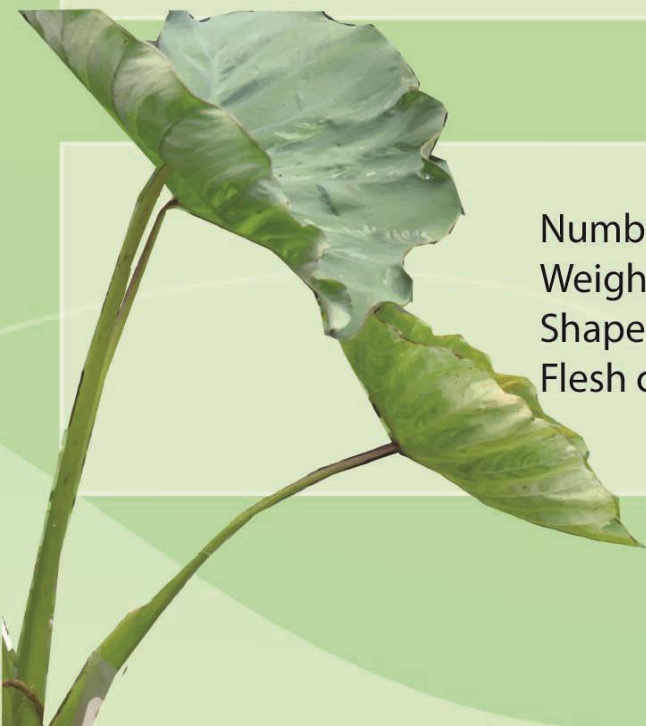


Number of cormels: 5 to 10

Weight of cormels: 141 g

Shape of cormels: Elliptical

Flesh color of cormels: Light yellow





# Accession No. 00016



Predominant position of leaf lamina surface: Cup-shaped  
Leaf base shape: Peltate  
Leaf blade margin: Entire  
Leaf blade color: Yellow or yellow green  
Leaf blade color variegation: Absent  
Petiole length: 36.75 cm  
Leaf blade margin color: Green  
Leaf lamina appendages: Present  
Lamina length: 17.33 cm  
Petiole junction pattern: Large  
Petiole junction color: Yellow green  
Sap color of leaf blade tip: Whitish  
Leaf main vein color: Yellow

Leaf main vein variegation: Absent  
Vein pattern: V pattern  
Color of top third petiole: Light green  
Color of middle third: Green  
Color of basal third: Light green  
Petiole stripe: Absent  
Petiole basal-ring color: Purple  
Cross-section of lower part of petiole: Closed  
Sheath length: 24.33 cm  
Total petiole length: 42.33 cm  
Leaf sheath color: Light Green  
Leaf sheath edge color: Green purple  
Leaf waxiness: High



Flower formation: Absent  
Number of stolons: 1-5  
Stolon length: Long ( $\geq 15$  cm)  
Number of suckers (direct shoot): 1-5  
Plant span: Narrow ( $< 50$  cm)  
Plant height: Dwarf ( $< 50$  cm)



Corm manifestation: Yes  
Corm length: Short (8 cm)  
Corm branching : Unbranched  
Corm shape: Conical  
Corm weight: 0.5 kg  
Corm cortex color: Cream

Corm flesh color of central part: Cream  
Corm flesh fibre color: Light Yellow  
Corm skin surface: Fibrous  
Corm skin thickness: Thin  
Degree of fibrousness of corm: Slightly fibrous  
Bud color: Cream



Number of cormels: Less than 5  
Weight of cormels: 100 g  
Shape of cormels: Conical  
Flesh color of cormels: White





# Accession No. 00017

Predominant position of leaf lamina surface: Cup-shaped  
Leaf base shape: Peltate  
Leaf blade margin: Undulate  
Leaf blade color: Yellow or yellow green  
Leaf blade color variegation: Absent  
Petiole length: 137 cm  
Leaf blade margin color: Green  
Leaf lamina appendages: Present  
Lamina length: 87.67 cm  
Petiole junction pattern: Small  
Petiole junction color: Light Green  
Sap color of leaf blade tip: Whitish  
Leaf main vein color: Light Green

Leaf main vein variegation: Absent  
Vein pattern: V pattern  
Color of top third petiole: Light green  
Color of middle third: Green  
Color of basal third: Yellow  
Petiole stripe: Absent  
Petiole basal-ring color: Cream  
Cross-section of lower part of petiole: Open  
Sheath length: 96.33 cm  
Total petiole length: 137 cm  
Leaf sheath color: Red purple  
Leaf sheath edge color: Light purple  
Leaf waxiness: Medium



Flower formation: Absent  
Number of suckers (direct shoot): 20  
Plant span: Wide (>100 cm)  
Plant height: Tall (>100 cm)



Corm manifestation: Yes  
Corm length: Long (18 cm)  
Corm branching : Branched  
Corm shape: Cylindrical  
Corm weight: 2.0 kg  
Corm cortex color: Light purple

Corm flesh color of central part: Light Purple  
Corm flesh fibre color: Pink  
Corm skin surface: Fibrous  
Corm skin thickness: Thin  
Degree of fibrousness of corm: Slightly fibrous  
Bud color: Purple



Number of cormels: More than 10  
Weight of cormels: 1500 g  
Shape of cormels: Elongated and curved  
Flesh color of cormels: Light red purple





# Accession No. 00018



Predominant position of leaf lamina surface: Cup-shaped  
Leaf base shape: Peltate  
Leaf blade margin: Undulate  
Leaf blade color: Light Green  
Leaf blade color variegation: Absent  
Petiole length: 82.5 cm  
Leaf blade margin color: Green  
Leaf lamina appendages: Present  
Lamina length: 33.75 cm  
Petiole junction pattern: Medium  
Petiole junction color: Light Green  
Sap colour of leaf blade tip: Whitish  
Leaf main vein color: Light Green

Leaf main vein variegation: Absent  
Vein pattern: V pattern  
Color of top third petiole: Yellow green  
Color of middle third: Green  
Color of basal third: Green  
Petiole stripe: Absent  
Petiole basal-ring color: White  
Cross-section of lower part of petiole: Open  
Sheath length: 47.5 cm  
Total petiole length: 82.54 cm  
Leaf sheath color: Green  
Leaf sheath edge color: Light purple  
Leaf waxiness: Medium



Flower formation: Absent  
Number of suckers (direct shoot): 6 – 10  
Plant span: Medium (50 – 100 cm)  
Plant height: Tall (>100 cm)



Corm manifestation: Yes  
Corm length: Intermediate (12 cm)  
Corm branching : Branched  
Corm shape: Cylindrical  
Corm weight: 0.5 kg  
Corm cortex color: Cream

Corm flesh color of central part: Cream  
Corm flesh fibre color: Cream  
Corm skin surface: Fibrous  
Corm skin thickness: Thin  
Degree of fibrousness of corm: Slightly fibrous  
Bud color: White



Number of cormels: 5 to 10  
Weight of cormels: 650 g  
Shape of cormels: Elongated and curved  
Flesh color of cormels: White





# Accession No. 00019

Predominant position of leaf lamina surface: Horizontal

Leaf base shape: Peltate

Leaf blade margin: Undulate

Leaf blade color: Purple

Leaf blade color variegation: Absent

Petiole length: 70.25 cm

Leaf blade margin color: Dark green

Leaf lamina appendages: Present

Lamina length: 33.25 cm

Petiole junction pattern: Medium

Petiole junction color: Dark green

Sap colour of leaf blade tip: Whitish

Leaf main vein color: Yellow green

Leaf main vein variegation: Absent

Vein pattern: V pattern

Color of top third petiole: Purple

Color of middle third: Purple

Color of basal third: Brown

Petiole stripe: Absent

Petiole basal-ring color: Purple

Cross-section of lower part of petiole: Open

Sheath length: 40 cm

Total petiole length: 70.25 cm

Leaf sheath color: Red purple

Leaf sheath edge color: Purple

Leaf waxiness: Medium



Flower formation: Absent

Number of suckers (direct shoot): 11 – 20

Plant span: Medium (50 – 100 cm)

Plant height: Medium (50 – 100 cm)



Corm manifestation: Yes

Corm length: Long (18 cm)

Corm branching : Unbranched

Corm shape: Elliptical

Corm weight: 0.5 kg

Corm cortex color: Light purple

Corm flesh colour of central part: Light purple

Corm flesh fibre color: Light purple

Corm skin surface: Fibrous

Corm skin thickness: Thick

Degree of fibrousness of corm: Slightly fibrous

Bud color: Purple



Number of cormels: More than 10

Weight of cormels: 750 g

Shape of cormels: Elongated and curve

Flesh color of cormels: Light purple





# Accession No. 00020



Predominant position of leaf lamina surface: Cup-shaped  
Leaf base shape: Peltate  
Leaf blade margin: Undulate  
Leaf blade color: Green purple  
Leaf blade color variegation: Absent  
Petiole length: 108.2 cm  
Leaf blade margin color: Yellow green  
Leaf lamina appendages: Present  
Lamina length: 49.6 cm  
Petiole junction pattern: Small  
Petiole junction color: Light green with purple  
Sap color of leaf blade tip: Whitish  
Leaf main vein color: Light green

Leaf main vein variegation: Absent  
Vein pattern: V pattern  
Color of top third petiole: Light green  
Color of middle third: Green  
Color of basal third: Green purple  
Petiole stripe: Absent  
Petiole basal-ring color: Red purple  
Cross-section of lower part of petiole: Open  
Sheath length: 67.2 cm  
Total petiole length: 108.2 cm  
Leaf sheath color: Red purple  
Leaf sheath edge color: Dark brown  
Leaf waxiness: Medium

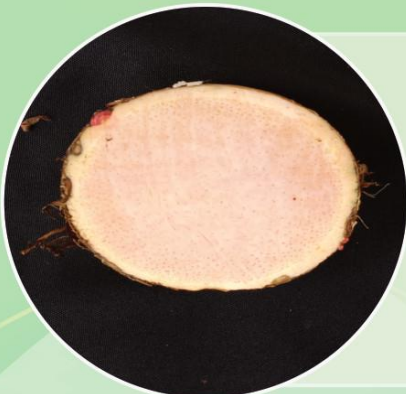


Flower formation: Absent  
Number of suckers (direct shoot): 11 – 20  
Plant span: Wide (>100 cm)  
Plant height: Tall (>100 cm)



Corm manifestation: Yes  
Corm length: Long (18 cm)  
Corm branching : Branched  
Corm shape: Round  
Corm weight: 0.5 kg  
Corm cortex color: Pink

Corm flesh color of central part: Pink  
Corm flesh fibre color: Brown  
Corm skin surface: Fibrous  
Corm skin thickness: Thin  
Degree of fibrousness of corm: Slightly fibrous  
Bud color: Red purple



Number of cormels: More than 10  
Weight of cormels: 500 g  
Shape of cormels: Round  
Flesh color of cormels: White purple





# Accession No. 00021

Predominant position of leaf lamina surface: Cup-shaped  
Leaf base shape: Peltate  
Leaf blade margin: Undulate  
Leaf blade color: Yellow or yellow green  
Leaf blade color variegation: Absent  
Petiole length (cm): 98 cm  
Leaf blade margin colour: Green  
Leaf lamina appendages: Present  
Lamina length: 58 cm  
Petiole junction pattern: Small  
Petiole junction color: Light green  
Sap color of leaf blade tip: Whitish  
Leaf main vein colour: Green

Leaf main vein variegation: Absent  
Vein pattern: V pattern (in a 'V' space)  
Color of top third petiole: Light green  
Color of middle third: Green  
Color of basal third: Dark green  
Petiole stripe: Absent  
Petiole basal-ring colour: Green (yellow green)  
Cross-section of lower part of petiole: Closed  
Sheath length (cm): 61  
Total petiole length (cm): 98  
Leaf sheath color: Light green  
Leaf sheath edge color: Purple  
Leaf waxiness: Medium



Flower formation: Absent  
Number of suckers (direct shoot): 11 - 20  
Plant span: Wide (>100 cm)  
Plant height: Tall (>100 cm)



Corm manifestation: Yes  
Corm length: Long (18 cm)  
Corm branching: Branched  
Corm shape: Conical  
Corm weight: 0.5 kg  
Corm cortex color: White

Corm flesh color of central part: White  
Corm flesh fibre colour: Cream  
Corm skin surface: Fibrous  
Corm skin thickness: Thin  
Degree of fibrousness of corm: Slightly fibrous  
Bud color: Yellow-green



Number of cormels: More than 10  
Weight of cormels: 2700 g  
Shape of cormels: Elongated and curved  
Flesh colour of cormels: White





# Accession No. 00022



Predominant position of leaf lamina surface: Cup-shaped  
Leaf base shape: Peltate  
Leaf blade margin: Undulate  
Leaf blade color: Whitish  
Leaf blade color variegation: Absent  
Petiole length: 87 cm  
Leaf blade margin color: Yellow green  
Leaf lamina appendages: Present  
Lamina length: 43.6 cm  
Petiole junction pattern: Small  
Petiole junction color: Yellow green  
Sap color of leaf blade tip: Whitish  
Leaf main vein color: Yellow

Leaf main vein variegation: Absent  
Vein pattern: V pattern  
Color of top third petiole: Yellow  
Color of middle third: Yellow green  
Color of basal third: Green  
Petiole stripe: Absent  
Petiole basal-ring color: Green (yellow green)  
Cross-section of lower part of petiole: Open  
Sheath length: 51.4 cm  
Total petiole length: 86.2 cm  
Leaf sheath color: Light green with purple  
Leaf sheath edge color: Light purple  
Leaf waxiness: Low



Flower formation: Rarely flowering (less than 10% of plants flowering)  
Inflorescence stalk colour: Yellow green  
Number of inflorescences/leaf axis: Two  
Number of floral clusters per plant: One  
Male portion of inflorescence: Enclosed  
Pollen production: Present  
Pollen color: Light yellow  
Fertility of female part of the inflorescence: None  
Pigmentation of male portion: Absent

Number of stolons: None  
Number of suckers (direct shoot): 11 - 20  
Plant span: Wide (>100 cm)  
Plant height: Tall (>100 cm)



Corm manifestation: Yes  
Corm length: Long (18 cm)  
Corm branching: Branched  
Corm shape: Conical  
Corm weight: (0.5 kg)  
Corm cortex color: White

Corm flesh color of central part: Cream  
Corm flesh fibre colour: Light yellow  
Corm skin surface: Fibrous  
Corm skin thickness: Thin  
Degree of fibrousness of corm: Slightly fibrous  
Bud color: White



Number of cormels: More than 10  
Weight of cormels: 500 g  
Shape of cormels: Elliptical  
Flesh color of cormels: Cream





# Accession No. 00023

Predominant position of leaf lamina surface: Cup-shaped

Leaf base shape: Peltate

Leaf blade margin: Undulate

Leaf blade color: Dark purple

Leaf blade color variegation: Absent

Petiole length: 60.67 cm

Leaf blade margin color: Green

Leaf lamina appendages: Present

Lamina length: 20 cm

Petiole junction pattern: Large

Petiole junction color: Purple

Sap color of leaf blade tip: Whitish

Leaf main vein color: Light green

Leaf main vein variegation: Absent

Vein pattern: Y pattern

Color of top third petiole: Dark purple

Color of middle third: Purple

Color of basal third: Light purple

Petiole stripe: Absent

Petiole basal-ring color: Light pink

Cross-section of lower part of petiole: Closed

Sheath length: 32 cm

Total petiole length: 66.67 cm

Leaf sheath color: Light purple

Leaf sheath edge color: Purple (continuous)

Leaf waxiness: High



Flower formation: Absent

Number of stolons: 6 - 10

Stolon length: Long ( $\geq 15$  cm)

Plant span: Wide ( $> 100$  cm)

Plant height: Medium (50 - 100 cm)



Corm manifestation: Yes

Corm length: Intermediate (12 cm)

Corm branching : Unbranched

Corm shape: Conical

Corm weight: (0.5 kg)

Corm cortex color: White

Corm flesh color of central part: Cream

Corm flesh fibre color: Red-purple

Corm skin surface: Smooth

Corm skin thickness: Thin

Degree of fibrousness of corm: Slightly fibrous

Bud color: White



Number of cormels: 5 to 10

Weight of cormels: 245 g

Shape of cormels: Round

Flesh color of cormels: Yellow





# Accession No. 00024



Predominant position of leaf lamina surface: Erect  
Leaf base shape: Peltate  
Leaf blade margin: Undulate  
Leaf blade color: Yellow or Yellow green  
Leaf blade color variegation: Absent  
Petiole length: 39 cm  
Leaf blade margin color: Green  
Leaf lamina appendages: Present  
Lamina length: 16.33 cm  
Petiole junction pattern: Small  
Petiole junction color: Green  
Sap color of leaf blade tip: Whitish  
Leaf main vein color: Green

Leaf main vein variegation: Absent  
Vein pattern: Y pattern  
Color of top third petiole: Light green  
Color of middle third: Light green  
Color of basal third: Green  
Petiole stripe: Absent  
Petiole basal-ring color: White  
Cross-section of lower part of petiole: Closed  
Sheath length: 20.33 cm  
Total petiole length: 39 cm  
Leaf sheath color: Light green  
Leaf sheath edge color: Brown  
Leaf waxiness: High



Flower formation: Absent  
Number of stolons: 1 – 5  
Stolon length: Long ( $\geq 15$  cm)  
Plant span: Narrow ( $< 50$  cm)  
Plant height: Medium (50 - 100 cm)



Corm manifestation: Yes  
Corm length: Short (8 cm)  
Corm branching : Unbranched  
Corm shape: Cylindrical  
Corm weight: 0.5 kg  
Corm cortex color: Cream

Corm flesh color of central part: Cream  
Corm flesh fibre color: Light yellow  
Corm skin surface: Fibrous  
Corm skin thickness: Thin  
Degree of fibrousness of corm: Slightly fibrous  
Bud color: White



Number of cormels: Less than 5  
Weight of cormels: 58.9 g  
Shape of cormels: Cylindrical  
Flesh color of cormels: Light yellow





# Accession No. 00025

Predominant position of leaf lamina surface: Cup-shaped

Leaf base shape: Peltate

Leaf blade Margin: Entire

Leaf blade color: Green

Leaf blade color variegation: Absent

Petiole length: 21.5 cm

Leaf blade margin color: Light green

Leaf lamina appendages: Present

Lamina length: 9.5 cm

Petiole junction pattern: Large

Petiole junction color: Green

Sap color of leaf blade tip: Whitish

Leaf main vein color: Light green

Leaf main vein variegation: Absent

Vein pattern: Y pattern

Color of top third petiole: Whitish

Color of middle third: Light green

Color of basal third: Light green

Petiole stripe: Absent

Petiole basal-ring color: Pink

Cross-section of lower part of petiole: Closed

Sheath length: 12 cm

Total petiole length: 21.5 cm

Leaf sheath color: Light green

Leaf sheath edge color: Light purple

Leaf waxiness: High



Flower formation: Absent

Number of stolons (side shoots): 6 - 10

Stolon length: Long ( $\geq 15$  cm)

Plant span: Narrow ( $< 50$  cm)

Plant height: Dwarf ( $< 50$  cm)



Corm manifestation: Yes

Corm length: Short (8 cm)

Corm branching : Unbranched

Corm shape: Conical

Corm weight: 0.5 kg

Corm cortex color: White

Corm flesh color of central part: White

Corm flesh fibre color: Light yellow

Corm skin surface: Smooth

Corm skin thickness: Thin

Degree of fibrousness of corm: Slightly fibrous

Bud color: White



Number of cormels: 5 to 10

Weight of cormels: 82.6 g

Shape of cormels: Cylindrical

Flesh color of cormels: Yellow white





# Accession No. 00026



Predominant position of leaf lamina surface: Cup-shaped  
Leaf base shape: Peltate  
Leaf blade margin: Entire  
Leaf blade color: Green  
Leaf blade color variegation: Absent  
Petiole length: 55.5 cm  
Leaf blade margin color: Green  
Leaf lamina appendages: Present  
Lamina length: 24.5 cm  
Petiole junction pattern: Large  
Petiole junction color: Green  
Sap color of leaf blade tip: Whitish  
Leaf main vein color: Other

Leaf main vein variegation: Absent  
Vein pattern: Y pattern  
Color of top third petiole: Light Green  
Color of middle third: Green  
Color of basal third: Other  
Petiole stripe: Absent  
Petiole basal-ring color: Pink  
Cross-section of lower part of petiole: Closed  
Sheath length: 32 cm  
Total petiole length: 55.5 cm  
Leaf sheath color: Light green  
Leaf sheath edge color: Other  
Leaf waxiness: High



Flower formation: Absent  
Plant span: Narrow (<50 cm)  
Plant height: Dwarf (<50 cm)



Corm manifestation: Yes  
Corm length: Intermediate (12cm)  
Corm branching : Unbranched  
Corm shape: Elliptical  
Corm weight: 0.5 kg  
Corm cortex color: White

Corm flesh color of central part: White  
Corm flesh fibre color: Light Yellow  
Corm skin surface: Fibrous  
Corm skin thickness: Thin  
Degree of fibrousness of corm: Slightly fibrous  
Bud color: White



Number of cormels: None  
Weight of cormels: N/A  
Shape of cormels: Cylindrical  
Flesh color of cormels: White





# Accession No. 00027

Predominant position of leaf lamina surface: Cup-shaped

Leaf base shape: Peltate

Leaf blade margin: Undulate

Leaf blade color: Purple

Leaf blade color variegation: Absent

Petiole length: 49.5 cm

Leaf blade margin color: Other

Leaf lamina appendages: Present

Lamina length: 18.33 cm

Petiole junction pattern: Large

Petiole junction color: Other

Sap color of leaf blade tip: Whitish

Leaf main vein color: Purple

Leaf main vein variegation: Absent

Vein pattern: Y pattern

Color of top third petiole: Purple

Color of middle third: Purple

Color of basal third: Light Green

Petiole stripe: Absent

Petiole basal-ring color: White

Cross-section of lower part of petiole: Closed

Sheath length: 23.5 cm

Total petiole length: 49.5 cm

Leaf sheath color: Red purple

Leaf sheath edge color: Purple

Leaf waxiness: High



Flower formation: Absent

Number of suckers (direct shoot): 1-5

Plant span: Narrow (<50 cm)

Plant height: Medium (50 - 100 cm)



Corm manifestation: Yes

Corm length: Short (8 cm)

Corm branching : Unbranched

Corm shape: Cylindrical

Corm weight: 0.5 kg

Corm cortex color: White

Corm flesh color of central part: White

Corm flesh fibre color: Yellow or orange

Corm skin surface: Lower part smooth

Corm skin thickness: Thick

Degree of fibrousness of corm: Slightly fibrous

Bud color: White



Number of cormels: Less than 5

Weight of cormels: 2.3 g

Shape of cormels: Cylindrical

Flesh color of cormels: Light brown





# Accession No. 00028



Predominant position of leaf lamina surface: Erect  
 Leaf base shape: Peltate  
 Leaf blade margin: Entire  
 Leaf blade color: Green  
 Leaf blade color variegation: Absent  
 Petiole length: 50.67 cm  
 Leaf blade margin color: Green  
 Leaf lamina appendages: Present  
 Lamina length: 21.67 cm  
 Petiole junction pattern: Large  
 Petiole junction color: Green  
 Sap color of leaf blade tip: Yellow  
 Leaf main vein color: Green

Leaf main vein variegation: Absent  
 Vein pattern: Y pattern  
 Color of top third petiole: Light green  
 Color of middle third: Light green  
 Color of basal third: Green  
 Petiole stripe: Absent  
 Petiole basal-ring color: Whitish  
 Cross-section of lower part of petiole: Open  
 Sheath length: 22.67 cm  
 Total petiole length: 50.67 cm  
 Leaf sheath color: Light green  
 Leaf sheath edge color: Light green  
 Leaf waxiness: High



Flower formation: Absent  
 Number of stolons: 1-5  
 Stolon length: Long ( $\geq 15$  cm)  
 Number of suckers (direct shoot): 1-5  
 Plant span: Medium (50 – 100 cm)  
 Plant height: Medium (50 - 100 cm)



Corm manifestation: Yes  
 Corm length: Short (8 cm)  
 Corm branching : Unbranched  
 Corm shape: Elliptical  
 Corm weight: 0.5 kg  
 Corm cortex color: Cream

Corm flesh color of central part: Cream  
 Corm flesh fibre color: Yellow or orange  
 Corm skin surface: Fibrous  
 Corm skin thickness: Thin  
 Degree of fibrousness of corm: Slightly fibrous  
 Bud color: White



Number of cormels: Less than 5  
 Weight of cormels: 24 g  
 Shape of cormels: Cylindrical  
 Flesh color of cormels: Cream





# Accession No. 00028



Predominant position of leaf lamina surface: Erect  
Leaf base shape: Peltate  
Leaf blade margin: Entire  
Leaf blade color: Green  
Leaf blade color variegation: Absent  
Petiole length: 50.67 cm  
Leaf blade margin color: Green  
Leaf lamina appendages: Present  
Lamina length: 21.67 cm  
Petiole junction pattern: Large  
Petiole junction color: Green  
Sap color of leaf blade tip: Yellow  
Leaf main vein color: Green

Leaf main vein variegation: Absent  
Vein pattern: Y pattern  
Color of top third petiole: Light green  
Color of middle third: Light green  
Color of basal third: Green  
Petiole stripe: Absent  
Petiole basal-ring color: Whitish  
Cross-section of lower part of petiole: Open  
Sheath length: 22.67 cm  
Total petiole length: 50.67 cm  
Leaf sheath color: Light green  
Leaf sheath edge color: Light green  
Leaf waxiness: High



Flower formation: Absent  
Number of stolons: 1-5  
Stolon length: Long ( $\geq 15$  cm)  
Number of suckers (direct shoot): 1-5  
Plant span: Medium (50 – 100 cm)  
Plant height: Medium (50 - 100 cm)



Corm manifestation: Yes  
Corm length: Short (8 cm)  
Corm branching : Unbranched  
Corm shape: Elliptical  
Corm weight: 0.5 kg  
Corm cortex color: Cream

Corm flesh color of central part: Cream  
Corm flesh fibre color: Yellow or orange  
Corm skin surface: Fibrous  
Corm skin thickness: Thin  
Degree of fibrousness of corm: Slightly fibrous  
Bud color: White



Number of cormels: Less than 5  
Weight of cormels: 24 g  
Shape of cormels: Cylindrical  
Flesh color of cormels: Cream





# Accession No. 00029

Predominant position of leaf lamina surface: Erect

Leaf base shape: Peltate

Leaf blade margin: Undulate

Leaf blade color: Purple

Leaf blade color variegation: Absent

Petiole length: 55.57 cm

Leaf blade margin color: Yellow green

Leaf lamina appendages: Present

Lamina length: 22.67 cm

Petiole junction pattern: Small

Petiole junction color: Purple

Sap color of leaf blade tip: Whitish

Leaf main vein color: Green

Leaf main vein variegation: Absent

Vein pattern: Y pattern

Color of top third petiole: Purple

Color of middle third: Purple

Color of basal third: Purple

Petiole stripe: Present; Dark purple

Petiole basal-ring color: Purple

Cross-section of lower part of petiole: Closed

Sheath length: 32 cm

Total petiole length: 55.67 cm

Leaf sheath color: Red purple

Leaf sheath edge color: Dark purple

Leaf waxiness: High



Flower formation: Absent

Number of suckers (direct shoot): 1 - 5

Plant span: Medium (50 – 100 cm)

Plant height: Medium (50 – 100 cm)



Corm manifestation: Yes

Corm length: Short (8 cm)

Corm branching : Branched

Corm shape: Cylindrical

Corm weight: 0.5 kg

Corm cortex color: White

Corm flesh color of central part: White

Corm flesh fibre color: Light yellow

Corm skin surface: Fibrous

Corm skin thickness: Thin

Degree of fibrousness of corm: Slightly fibrous

Bud color: Purple



Number of cormels: Less than 5

Weight of cormels: 86.5 g

Shape of cormels: Elongated

Flesh color of cormels: White





# Accession No. 00030



Predominant position of leaf lamina surface: Horizontal  
Leaf base shape: Peltate  
Leaf blade margin: Undulate  
Leaf blade color: Purple  
Leaf blade color variegation: Absent  
Petiole length: 91 cm  
Leaf blade margin color: Dark green  
Leaf lamina appendages: Present  
Lamina length: 36.67 cm  
Petiole junction pattern: Large  
Petiole junction color: Green with purple  
Sap color of leaf blade tip: Whitish  
Leaf main vein color: Light green

Leaf main vein variegation: Absent  
Vein pattern: Y pattern  
Color of top third petiole: Purple  
Color of middle third: Light purple  
Color of basal third: Dark green  
Petiole stripe: Absent  
Petiole basal-ring color: White  
Cross-section of lower part of petiole: Closed  
Sheath length: 44.33 cm  
Total petiole length: 85 cm  
Leaf sheath color: Purple with green  
Leaf sheath edge color: Red purple  
Leaf waxiness: High

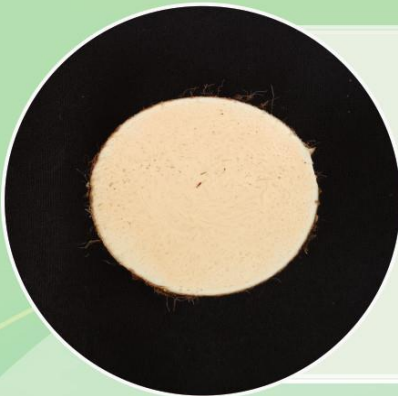


Flower formation: Absent  
Number of stolons: 1 – 5  
Stolon length: Long ( $\geq 15$  cm)  
Number of suckers (direct shoot): 1 – 5  
Plant span: Medium (50 – 100 cm)  
Plant height: Tall ( $> 100$  cm)



Corm manifestation: Yes  
Corm length: Long (18 cm)  
Corm branching : Unbranched  
Corm shape: Conical  
Corm weight: 0.5 kg  
Corm cortex color: Cream

Corm flesh color of central part: Cream  
Corm flesh fibre color: Peach  
Corm skin surface: Smooth  
Corm skin thickness: Thin  
Degree of fibrousness of corm: Slightly fibrous  
Bud color: Cream



Number of cormels: Less than 5  
Weight of cormels: 18.3 g  
Shape of cormels: Round  
Flesh color of cormels: Cream





# Acknowledgement



## Crop Improvement and Plant Genetic Resources Section Staffs

Maricel Mamalayan, Mark Christopher Valdez, Alex Pedroso, Raymond Estañol, and Eldwin Aragonés have joined forces to bring you this captivating catalogue, designed by Rosfel Simpliciano. Their combined expertise and passion have culminated in this exceptional piece.

The authors would like to express their sincere gratitude to the provincial governments of Oriental Mindoro, Occidental Mindoro, Quezon, Occidental Rizal, Negros Occidental, Davao, and Batangas for their invaluable support and assistance in collecting taro germplasm within their respective provinces. Their cooperation and facilitation of our research were instrumental in the success of this endeavor.



## References:

Teh, K. (2020, July 16). Taro ranks third in production and hectarage among root crops grown in the Philippines but lagging behind cassava or sweet potato in terms of demand. Tridge. <https://www.tridge.com/insights/JOL-FCAF3834>

Tridge. (2024). Philippines Taro market overview. <https://www.tridge.com/intelligences/taro/PH>

Villanueva, M. R., & Tupas, G. L. (n.d.). Taro production in the Philippines - Its prospects and problems. In Proceedings of the Fifth Symposium. International Society for Tropical Root Crops. [http://www.istrc.org/images/Documents/Symposiums/Fifth/5th\\_symposium\\_proceedings\\_0052\\_557.pdf](http://www.istrc.org/images/Documents/Symposiums/Fifth/5th_symposium_proceedings_0052_557.pdf)

Huelgas, V. C., Dizon, L. S. H., Barrion, D. C. N., Manangkil, N. J. J., Perez, R. M. B., & Villavicencio, M. L. H. (2017). Characterization data of NPGRL taro accessions. National Plant Genetic Resources Laboratory. Genesys. <https://www.genesys-pgr.org/datasets/f7002e89-1bf0-4a8b-b809-ac31cb5a8b66>

For more information, you may contact:

DA-BPI Director

Tel.: 02-85252987; 02-85217650

Email: [bpi.do@buplant.da.gov.ph](mailto:bpi.do@buplant.da.gov.ph)

Website: <https://www.buplant.da.gov.ph/>

BPI-CRPSD

Crop Research and Production Support Division

Tel.: 02-85257313

Email: [crpsd@buplant.da.gov.ph](mailto:crpsd@buplant.da.gov.ph) or [bpipgr2024@gmail.com](mailto:bpipgr2024@gmail.com)

Prepared by:

Maricel R. Mamalayan, Agriculturist II

Mark Christopher E. Valdez, OIC-CIPGRS, Agrilculturist II

Alex S. Pedroso, Project Assistant II

Designed by:

Rosfel Simpliciano, Data Controller II

PUBLISHED BY:

BUREAU OF PLANT INDUSTRY - CROP RESEARCH AND PRODUCTION SUPPORT DIVISION

ISBN No. 978-971-9065-173